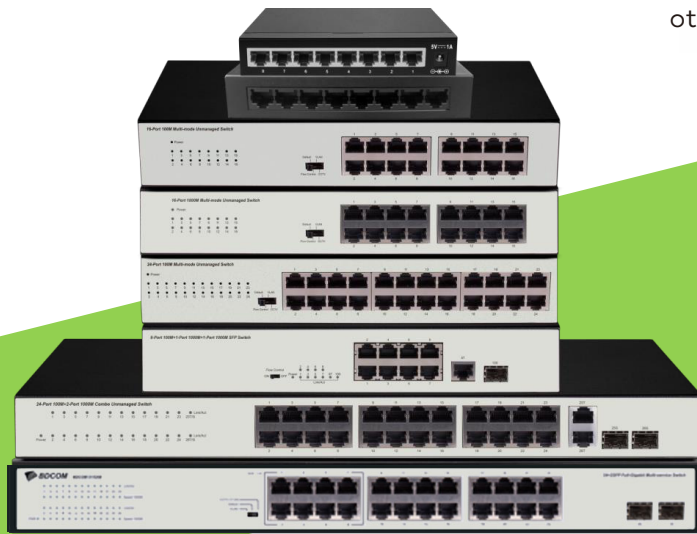


High Cost-effective Unmanaged Switch

S1000 Series



Product Overview

BDCOM S1000 Series is a high cost-effective unmanaged switch designed by BDCOM for the network in medium and small offices.

BDCOM S1000 Series has eight models involving three series, 100M, gigabit uplink and full-gigabit, which satisfies the requirement of networks in different scales such as hotels, campuses, dormitories and other medium and small enterprises.

S1000 Series
S1200 Series
S1500 Series

Product Characteristics

Switching Characteristics

- Non-block switching architecture and wire-speed forwarding supported by all ports;
- Large-buffer and HD video;
- IEEE802.3x full duplex flow control and Backpressure half-duplex flow control;
- Multi-functional DIP (dial-up switch), satisfying the requirement of different networks.

Practicability

- Plug and play; no need of configuration;
- Its LED indicates working status and error information.

Reliability

- Integrated professional thunder-proof electric circuit, adaptable to the outdoor environment;
- Complies with CE, FCC;
- Contact and small, fit for water-proof cabinet in the outdoor monitoring scenarios and buildings;
- 0-50°C working temperature.

Product Description

S1008D



- 8 100M TX ports
- AC-to-DC power adapter
- Dimensions mm(WxDxH): 138x78x25

S1016C



- 16 100M TX ports
- Built-in AC power supply
- Dimensions mm(WxDxH): 280x125x44

S1024C



- 24 100M TX ports
- Built-in AC power supply
- Dimensions mm(WxDxH): 280x125x44

S1210C



- 8 100M TX ports + 1GE TX port+1GE SFP port
- Built-in AC power supply
- Dimensions mm(WxDxH): 280x125x44

S1226C



- 24 100M TX ports + 2gigabit combo port
- Built-in AC power supply
- Dimensions mm(WxDxH): 440x210x44

S1508E



- 8 GE TX ports
- Built-in AC power supply
- Dimensions mm(WxDxH): 137x77x25

S1516D



- 16 GE TX ports
- Built-in AC power supply
- Dimensions mm(WxDxH): 280x125x44

S1526E



- 24 TX ports + 1GE TX port+1GE SFP port
- Built-in AC power supply
- Dimensions mm(WxDxH): 440x210x44

Product Specifications

Item	S1008D	S1016C	S1024C	S1210C
Switching capacity	1.6G	3.2G	4.8G	5.6G
MAC	1K	8K	8K	8K
Service port	8 100M TX ports	16 100M TX ports	24 100M TX ports	8 100M TX ports
Uplink port	/	/	/	1 GE TX port + 1 GE SFP port
Functional DIP	/	Standard, flow control, isolated, extended	Standard, flow control, isolated	/
Power supply	Power adapter	Built-in AC	Built-in AC	Built-in AC
Dimensions mm (WxDxH)	138x78x25	280x125x44	280x125x44	280x125x44

Item	S1226C	S1508E	S1516D	S1526E
Switching capacity	8.8G	16G	32G	56G
MAC	16K	4K	8K	8K
Service port	24 100M TX ports	8 GE TX ports	16 GE TX ports	24 GE TX ports
Uplink port	2 GE combo ports	/	/	2 GE SFP ports
Functional DIP	/	standard, isolated, extended	Standard, flow control, isolated	Standard, isolated, extended
Power supply	Built-in AC	Power adapter	Built-in AC	Built-in AC
Dimensions mm (WxDxH)	440x210x44	137x77x25	280x125x44	440x205x44
Heat dissipation	Fanless, noise-free cooling			
Environment	operating temperature/humidity: 0°C-50°C, 10%-90% non-condensing storage temperature/ humidity: -40°C -70°C, 5%-95% non-condensing			

Ordering Information

S1008D	Ethernet unmanaged switch with 8 100M TX ports, (8 100M TX ports; iron hull, fanless, external power adapter, desk-top installation)
S1016C	Ethernet unmanaged switch with 16 100M TX ports, (16 100M TX ports; 4 DIP groups, large- buffer, thunder-proof, AC220V, fanless, 11-inch chassis, rack-mounted installation)
S1024C	Ethernet unmanaged switch with 24 100M TX ports, (24 100M TX ports;4 DIP groups, large-buffer, thunder-proof, AC220V, fanless, 11-inch chassis, rack-mounted installation)
S1210C	Ethernet unmanaged switch with 8 100M TX ports, 1 gigabit TX port and 1 gigabit SFP port (8 100M TX ports, 1 gigabit TX port and 1 SFP port, large-buffer, thunder-proof, AC220V, fanless, 11-inch chassis, rack-mounted installation)
S1226C	Ethernet unmanaged switch with 24 100M TX ports and 2 gigabit combo ports (24 100M TX ports, 2 gigabit combo ports, large-buffer, thunder-proof, AC220V, fanless, 19-inch chassis, rack-mounted installation)
S1508E	Ethernet unmanaged switch with 8 gigabit TX ports (8 gigabit TX ports, 3 DIP groups, loop alarm LED indicator, external power adapter, 5V/1A (5-12V DC input), fanless, desk-top installation)
S1516D	Ethernet unmanaged switch with 16 gigabit TX ports (16 gigabit TX ports, 4 DIP groups, large buffer, thunder-proof, AC220V, fanless, 11-inch chassis, rack-mounted installation)
S1526E	Ethernet unmanaged switch with 24 gigabit TX ports and 2 gigabit SFP ports (24 gigabit TX ports, 2 gigabit SFP ports, 3 DIP groups, large-buffer, thunder-proof, AC220V, fanless, 19-inch chassis, rack-mounted installation) .

Copyright © Shanghai BDCOM Communication Technology Co., Ltd. 2021. All Rights Reserved.

This document is BDCOM Public Information. BDCOM reserves the right to alter, update and otherwise change the information contained in the document from time to time.
www.bdc.com.cn

